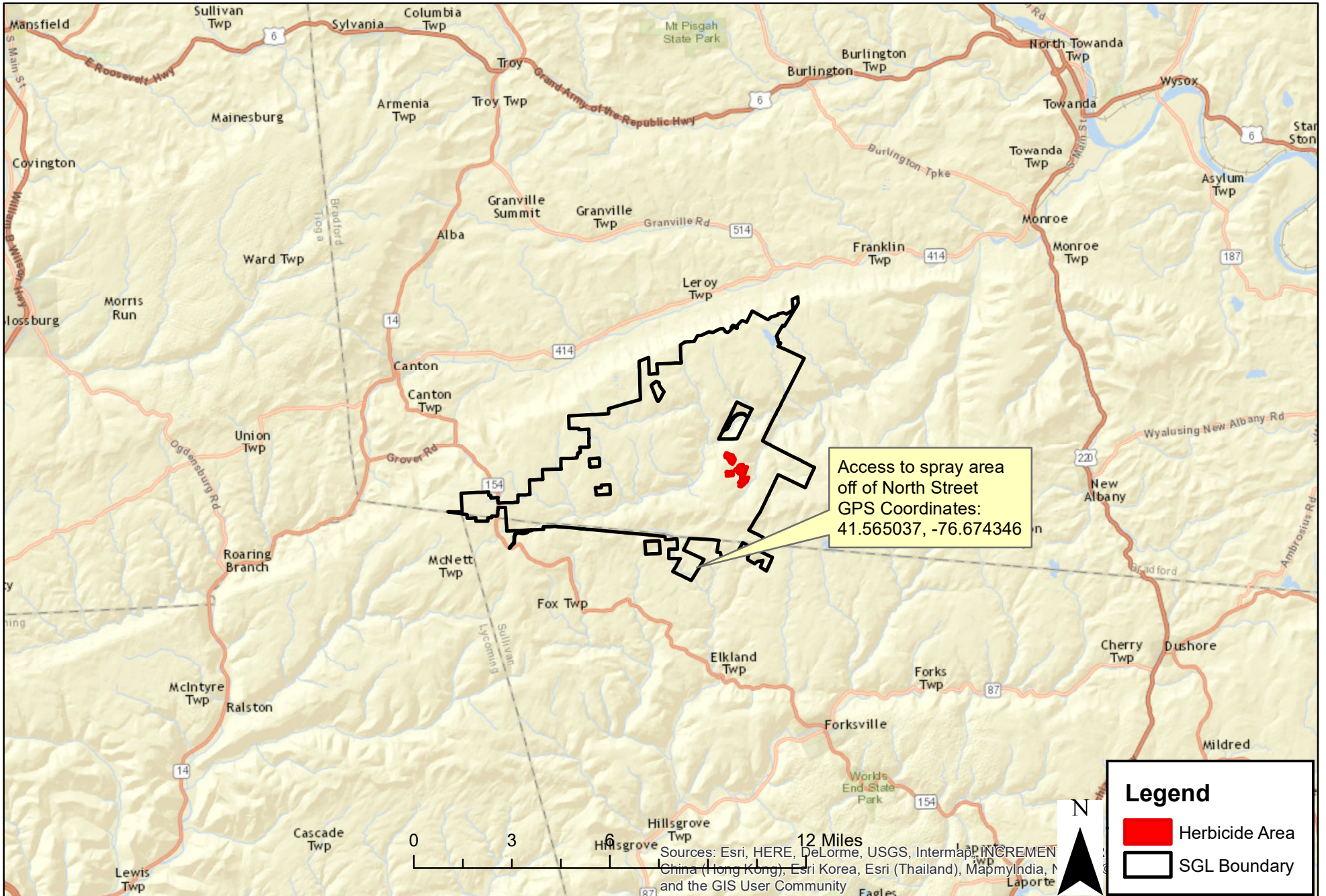


Bradford County  
Overton Township

# Loop II Herbicide Map SGL 12

Block 2: 40 acres  
Block 4: 17 acres  
Block 5: 47 acres  
Block 6: 38 acres  
Total: 142 acres



Access to spray area  
off of North Street  
GPS Coordinates:  
41.565037, -76.674346

**Legend**

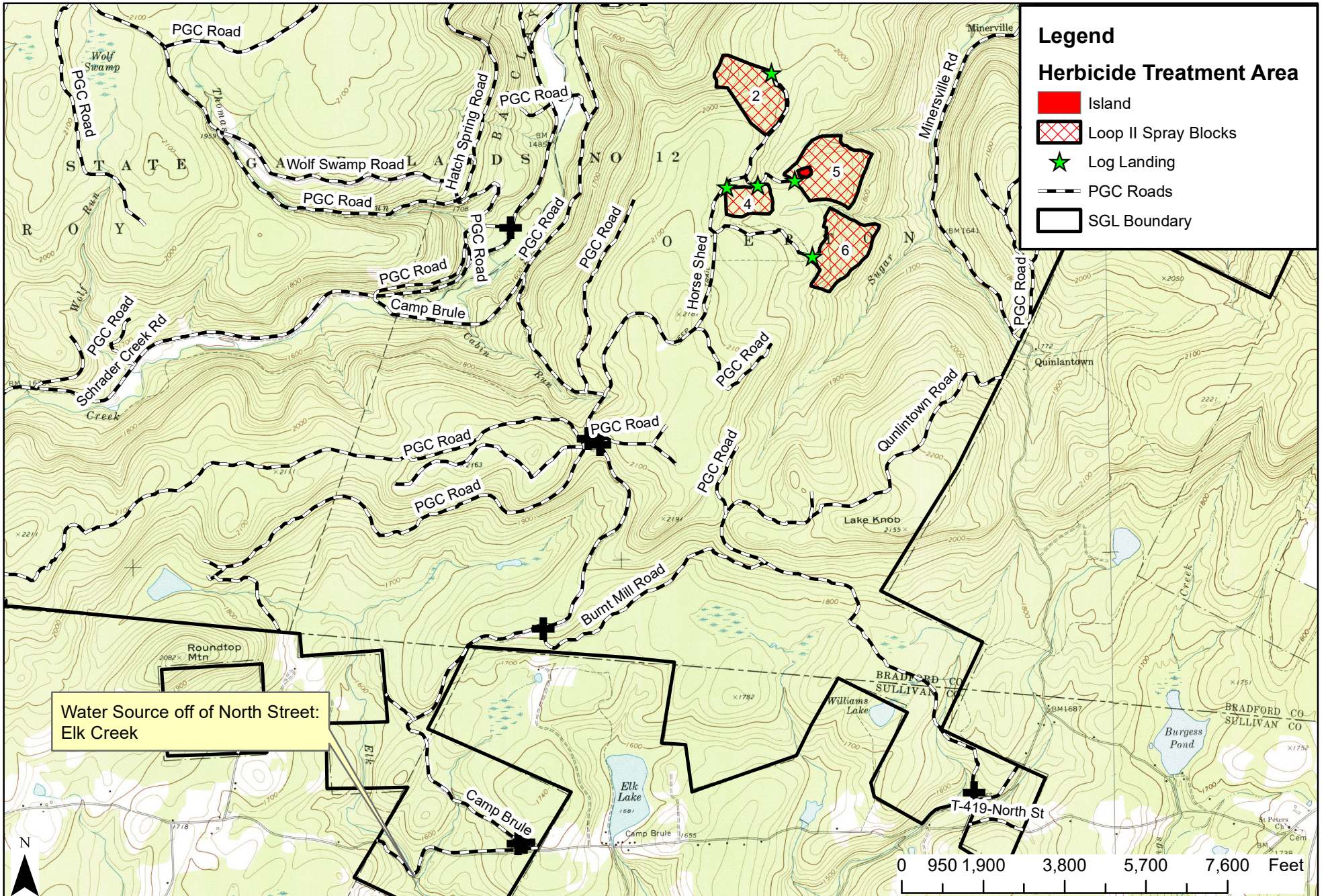
- Herbicide Area
- SGL Boundary

0 3 6 12 Miles

Sources: Esri, HERE, DeLorme, USGS, Intermap, INCREMENTAL, China (Hong Kong), Esri Korea, Esri (Thailand), MapmyIndia, and the GIS User Community

# Loop II Herbicide Map SGL 12

Block 2: 40 acres  
Block 4: 17 acres  
Block 5: 47 acres  
Block 6: 38 acres  
Total: 142 acres



**Legend**

**Herbicide Treatment Area**

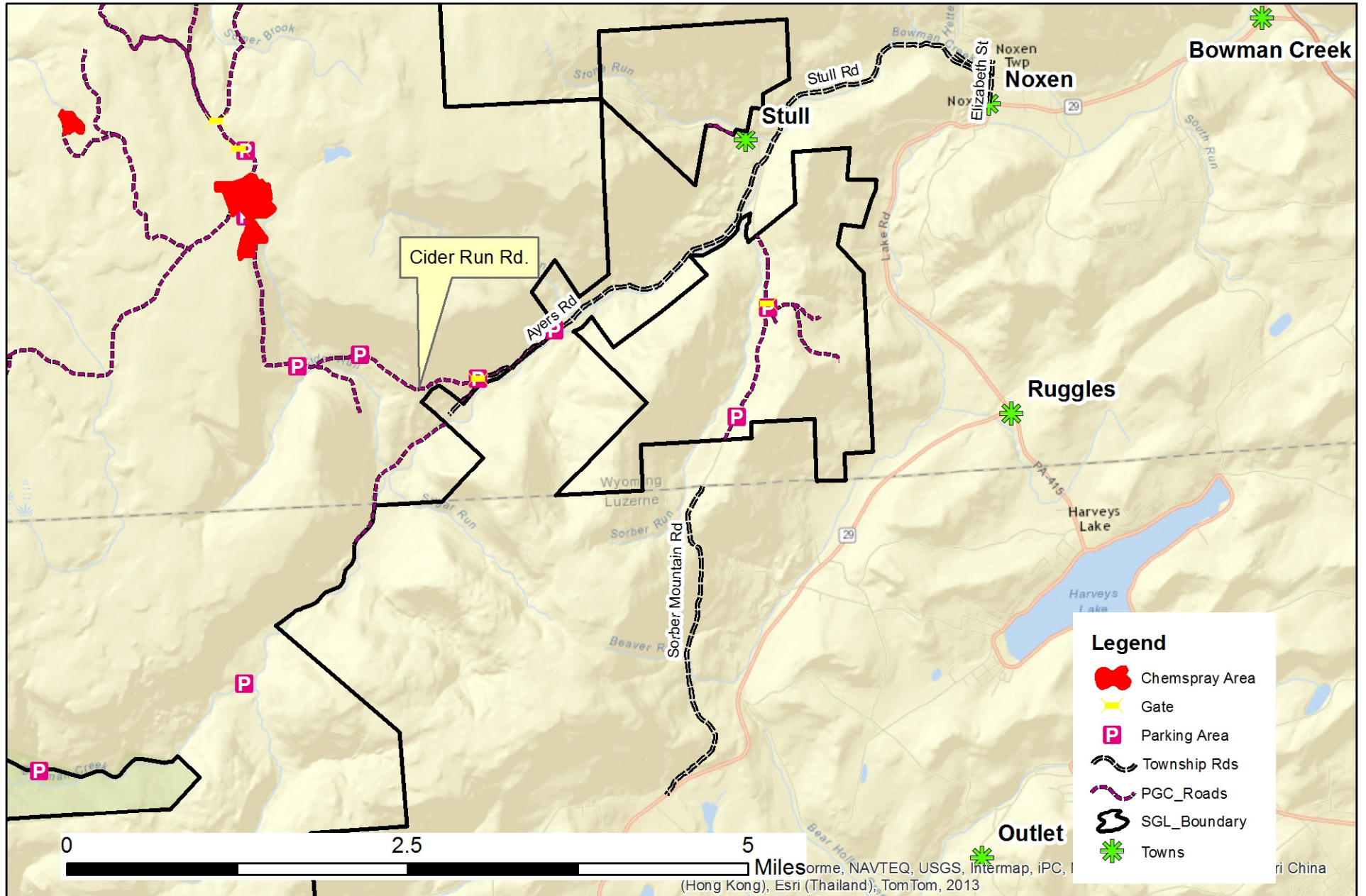
- Island
- Loop II Spray Blocks
- Log Landing
- PGC Roads
- SGL Boundary

Water Source off of North Street:  
Elk Creek

0 950 1,900 3,800 5,700 7,600 Feet

SGL 057  
Hell's Kitchen Location  
Wyoming County  
Forkston and Noxen Townships

1 inch = 5,280 feet

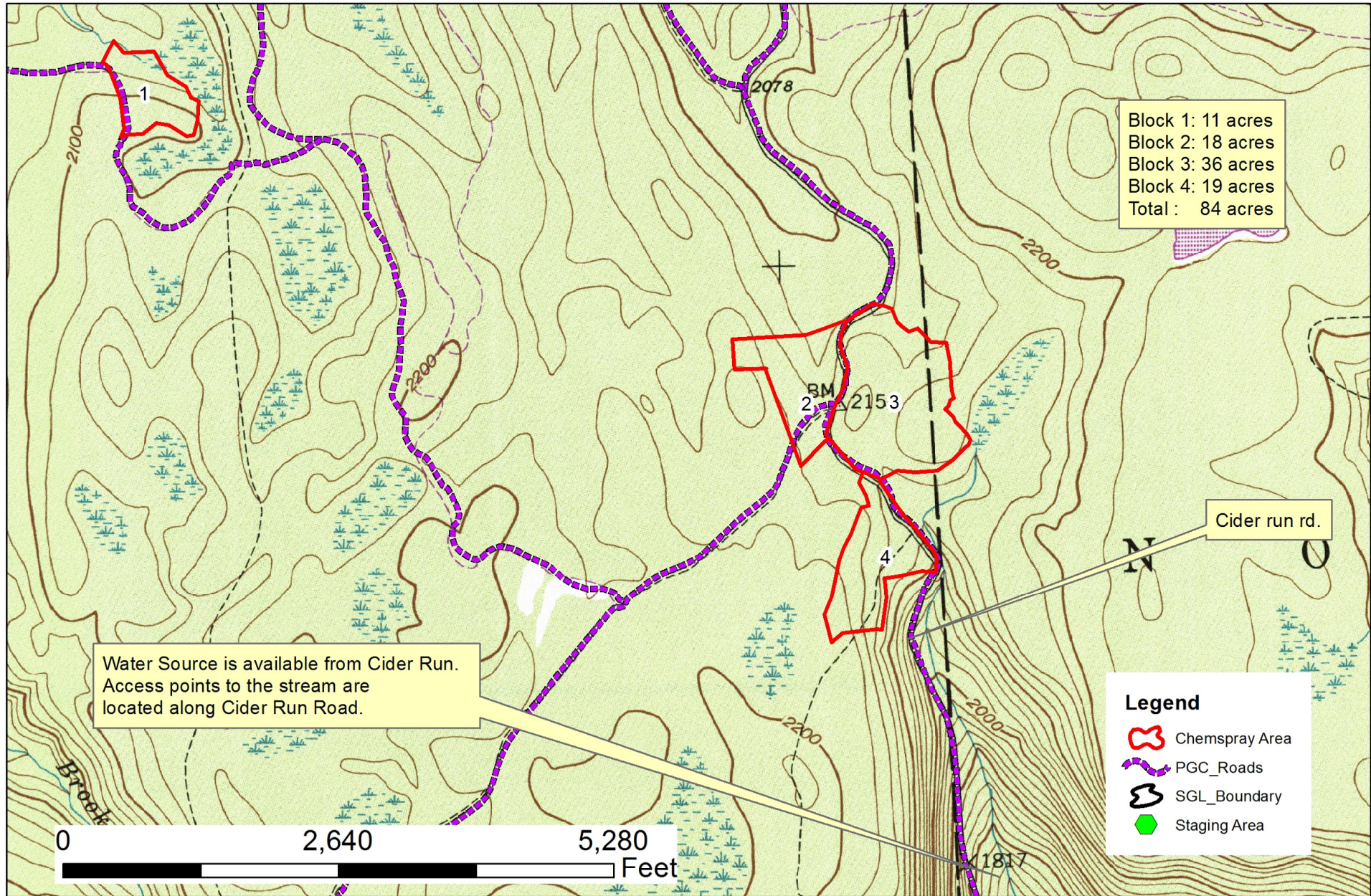




1 inch = 1,320 feet

SGL 057  
Hell's Kitchen Herbicide  
057-18-01  
Wyoming County  
Forkston and Noxen Townships

Compartment 14B Stand 92, 97  
Compartment 13 Stand 85  
Compartment 18 Stand 131, 132  
Compartment 19 Stand 141



Block 1: 11 acres  
Block 2: 18 acres  
Block 3: 36 acres  
Block 4: 19 acres  
Total : 84 acres

Water Source is available from Cider Run.  
Access points to the stream are  
located along Cider Run Road.

Cider run rd.

- Legend**
- Chemspray Area
  - PGC\_Roads
  - SGL\_Boundary
  - Staging Area

0 2,640 5,280 Feet

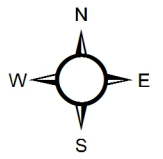


Compartment: 1  
Stands: 67 and 86

# Hemlock Creek Herbicide Application

## State Game Lands 070

### Susquehanna County, Harmony Twp. Wayne County, Scott Twp.



Forester: D. Wolfgang

1 inch = 1,320 feet

